

SKANDA VALE

Accommodation list 2024

This list of approved accommodation has been compiled to make it easier for pilgrims to find places to stay in the local area. As you may already know, we have very limited accommodation here at Skanda Vale, particularly during the summer months.

All the accommodation has been checked and verified as being suitable for pilgrims; this means that vegetarian food will be available, and there should not be any problems with pilgrims leaving early for the 5am puja. We would however like to remind pilgrims to leave quietly when attending the early pujas, so as not to disturb other guests.

Other unapproved local accommodation can be found by calling the Carmarthen Tourist Office on 01267 231557. The office is open seven days a week, between 10am and 5pm during the summer. During the winter they are open between 10am and 4pm, Monday to Saturday.

LLWYNCRYCHYDDOD

07794937471 / 07956256278 / Id.dayman@btopenworld.com / SA33 6JT

LOCATION:

Llanpumsaint. Less than half a mile from Skanda Vale – a couple of minutes drive.

FACILITIES:

We are a self-catering barn conversion located on our small working farm. The accommodation comprises a large living / dining area and kitchen downstairs, with two bedrooms and bathrooms upstairs. Sleeps 13 people.

This is a very tranquil setting, offering a quiet, rural experience. We currently provide TV but no WiFi. Heating, lighting, bed linen, towels and tea towels provided.

PRICES:

£30.00 per person, per night. If you would like to book the entire accommodation for sole use for stays over three nights, we will be happy to provide a separate quotation.



JOY'S COTTAGES

01267 253871 / 07969 989072 / SA33 6DB

LOCATION:

Llanpumsaint. About 5 minutes drive from Skanda Vale.

FACILITIES:

Three star accommodation in our self contained cottages, which together can sleep up to twelve guests. Transport to Skanda Vale and Carmarthen can be provided; £10 single journey or £20 return, subject to availability.

PRICES:

Standard rate: £35 per adult per night, £17.50 per child per night, including continental breakfast. Please contact Joy by mobile to arrange bookings.



FFERM-Y-FELIN

01267 253498 / 07961 218683 / www.ffermyfelin.com / SA33 6DA

LOCATION:

Llanpumsaint. About 5 minutes drive from Skanda Vale.

FACILITIES:

This is a four star farm guest house, with two self contained cottages – one of which is able to sleep 6, the other sleeps 4. All the rooms in the main house are ensuite with TV, towels, linen and tea making facilities.

PRICES:

From £99 per night for 2 guests.

From £70 per night for 1 guest.

From £20 – £25 per night per child (under 12 years).

Above prices include continental breakfast.

Dogs:

£10.00 per dog per night.



GWILI MILL

01267 253308 / SA33 6BY

LOCATION:

Llanpumsaint. About 5 minutes drive from Skanda Vale.

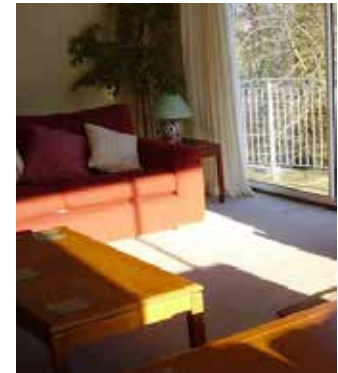
FACILITIES:

Five star self catering holiday home, that sleeps up to 15 people in seven bedrooms, five of which are ensuite. TV, DVD player, full kitchen, river views, lounge, and full size snooker table. Top quality bedding and towels are also provided.

PRICES:

Self catering accommodation from £1,100 for three nights.

Please note that bookings are only taken for a minimum of three nights.



THE NOOK AT TROED-Y-BRYN

07906883958 / premcharaka@hotmail.com / SA32 7DY

LOCATION:

Near Alltwalis – 8 minutes drive from Skanda Vale.

FACILITIES:

A small and cosy self catering apartment including a bedroom with a double bed, en-suite and a private kitchen. Looking out onto beautiful countryside. Private and sunny outdoor sitting space. Ample parking. The fitted kitchen includes a hob, a fridge and a sink, cupboard space and a little pull-out table and chair. Also included is all the basic kitchen equipment the a guest would need for a few days stay.

PRICES:

£50 per night, or for stays over a week or longer it is £40 per night.



SIRAMIK B&B

01559 384292 / 07866 000326 / www.siramik.co.uk / SA32 7DY

LOCATION:

Pontarsais - about 10 minutes drive from Skanda Vale.

FACILITIES:

Four star accommodation with 4 twin-bed rooms. Two rooms are en-suite, one with adapted bathroom facilities for people with disabilities. The family room shares the en-suite. All rooms have coffee and tea making facilities, TV, towels and bed linen. No children under 12 years old.

PRICES:

£35 per person per night for accommodation only.

£42.50 per person per night with breakfast (incl. vegetarian).



RED KITE COTTAGE

07815 704736 / www.redkitecottage.co.uk / SA32 7AG

LOCATION:

Peniel. About 14 minutes drive from Skanda Vale.

FACILITIES:

This is a five star self catering cottage that sleeps up to five people in two bedrooms. Accommodation features a large lounge with TV and DVD, a full kitchen, separate bathroom and sun deck with views over the surrounding countryside.

PRICES:

- Prices from £70 per night for up to maximum of 5 guests (subject to length of stay and season)
- £495 - £850 per week , open throughout the year.
- Single nights from £160 - £200 subject to season and availability.



THE COACH HOUSE ANNEXE

[Book on Airbnb](#)

LOCATION:

Alltwalis. 5 miles from Skanda Vale – 15 minutes drive.

FACILITIES:

Sleeps 4 - 2 bedrooms - 2 beds

A centrally-heated annexe with fully functional kitchen (should you wish to cook for yourself) complete with a dishwasher, fridge, oven, hob, microwave, washing machine and drier. A snug lounge area awaits with a 40" flat screen TV, BluRay DVD player and Wifi included. Sole use of garden with gas BBQ provided.

Transport to and from Carmarthen train station, and Skanda Vale is also available at £10 per journey.

PRICES:

From £49 per night.



LARK HILL TIPIS

01559 371581 / 07875 828890 / www.larkhilltipisandyurts.co.uk / SA33 6AT

LOCATION:

Cwmduad. About 19 minutes drive from SV.

FACILITIES:

This is self catering, camping style accommodation, ideal for groups and families. Guests bring their own bedding, torch & towels.

PRICES:

- Tipi or Lavvu (4 people)

Nightly rate – £70 / Weekend rate (Friday and Saturday night) – £160 / Weekly rate – £500

- Bentwood Yurt/Mongolian Ger (4 people)

Nightly rate – £80 / Weekend rate (Friday and Saturday night) – £180 / Weekly rate – £560

- Alachigh (6 people)

Nightly rate – £90 / Weekend rate (Friday and Saturday night) – £220 / Weekly rate – £650



OLD SCHOOL B&B

07748 594599 / www.oldschoolbandb.co.uk / SA39 9BS

LOCATION:

Approximately 6.5 miles or 20 minutes drive from Skanda Vale.

FACILITIES:

Friendly four star, award winning, eco-friendly self check-in B & B. We offer 5 rooms all with en-suite – 3 doubles and 2 singles. All rooms have power showers, toiletries, towels, tea/ coffee facilities, tv, wi-fi, hairdryer & bed linen. Free on-site parking and mature gardens. Self-service continental breakfast is included. Sorry – no children under the age of 16 or pets.

PRICES:

room 1 – 2 people from £90

room 2 – 2 people from £80

room 3 – 2 people from £80

room 4 – 1 person from £70

room 5 – 1 person from £65



WAUNWTHAN COTTAGE

07930 917713 / 01559 372318 / www.waunwthan.co.uk / SA44 5EJ

LOCATION:

Saron, Llandysul. 9 miles, 21 minutes from Skanda Vale.

FACILITIES:

2 high quality en suite bedrooms, each sleeping 2 people. Neither room is set up as a family room so unfortunately we cannot accommodate children. Both rooms have Freeview TV, hairdryer, and tea/coffee making facilities. Breakfast is included.

PRICES:

Prices per room per night for two people :

- £65 high season (May to September)

- £60 low season (October to April)

Offers are available for two nights or more.



THE IVY BUSH ROYAL HOTEL

01267 235111 / www.ivybushroyal.co.uk / SA31 1LG

LOCATION:

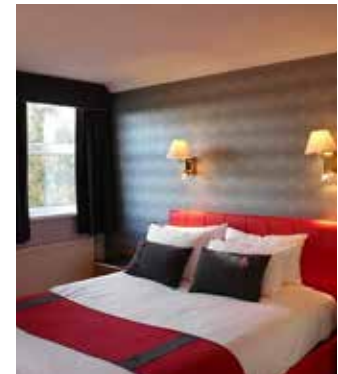
Carmarthen. About 21 minutes drive from Skanda Vale.

FACILITIES:

This is a three star hotel with 70 ensuite rooms. All the rooms have telephones, satellite TV, hairdryers and tea making facilities. Families are welcome, and there is the potential to accommodate coach groups.

PRICES:

Bed & breakfast, single room from £77.
Bed & breakfast, double room from £99.
Bed & breakfast, family room from £130.



LLAINDDU FARM COTTAGE

01559 371369 / www.llainddu-farm.co.uk / SA33 6AU

LOCATION:

Cwmduad. About 22 minutes drive from Skanda Vale.

FACILITIES:

Detached self-catering holiday cottage located in stunning countryside. Benefits from secluded location with private parking, central heating, TV, DVD, free broadband and fully equipped kitchen. Four bedrooms sleep up to 7 adults in comfort, although extra provision can be made for larger groups visiting the temples.

PRICES:

Single nights and longer stays are available. Prices start from £160 per night for up to 7 people.



RHIWIAU SELF CATERING

01267 253355 / rhiwiau.cymru / SA32 7JH

LOCATION:

Llanllawddog. About 22 minutes from Skanda Vale.

FACILITIES:

Very comfortable converted barn, sleeps five with two bedrooms — but, please, no more. Bedroom One: (upstairs) one king size bed. Bedroom Two: (ground floor) one bunk bed. A further single bed can be added to either bedroom.

Ground floor kitchen, sitting room, wetroom, toilet and utility room with washing machine. Central heating. Self catering.

PRICES:

£76.50 per night for one or two people — non refundable rate. An additional £20.00 for each extra person up to a maximum of five. Minimum stay is three nights.



THE BOAR'S HEAD HOTEL

01267 222789 / www.boarsheadhotel.net / SA31 3AE

LOCATION:

Carmarthen. About 23 minutes drive from Skanda Vale.

FACILITIES:

This is a three star hotel with restaurant and bars. All the rooms are ensuite with telephone, TV and tea making facilities. Families are welcome, and there is level access for elderly and disabled guests.

PRICES:

Bed & breakfast, single room from £48.

Bed & breakfast, double room from £60.

Bed & breakfast, family room from £90.



GILFACH WEN BARN

01267 240077 / 07780 476737 / www.brechfa-bunkhouse.com / SA32 7QL

LOCATION:

Brechfa. About 27 minutes drive from Skanda Vale.

FACILITIES:

Holiday cottage designed for large groups and families, with seven family size bedrooms. Large lounge, dining room and fully equipped kitchen. Large groups can book the accommodation for sole use.

PRICES:

Friday, Saturday & during School Holidays:
Minimum advance booking for groups of 20 people, staying minimum 2 nights – £20 pppn.
Bookings by smaller groups or single night stays accepted no more than 3 weeks in advance, if space available.
Mid week during school term: No minimum number of people or nights – £17.50 pppn.



MOELFRYN CARAVAN PARK

01559 371231 / www.moelfryncaravanpark.co.uk / SA38 9JE

LOCATION:

Newcastle Emlyn. About 28 minutes drive from Skanda Vale.

FACILITIES:

Self catering static caravans with three bedrooms. Master bedroom with double bed, second and third bedrooms with two single beds each. Bathroom with shower, full kitchen, dining area and lounge. Please bring your own sheets, duvet covers and towels. Sorry no pets allowed.

PRICES:

Weekend breaks start from £125 for two people.



DAIRY COTTAGES

01559 363163 / www.holidaycottageswestwales.co.uk / SA44 4PG

LOCATION:

Near Llandysul, about 28 minutes from Skanda Vale.

FACILITIES:

4 star self-catering holiday cottages. Each cottage has a bathroom and an en-suite shower room with fully equipped modern kitchens. The two bedrooms sleep four and an extra double sofa bed is also available in the lounge. We provide bed linen and towels, as well as Freesat TV, AV system and Wi-Fi.

PRICES:

Short breaks are available for minimum 3 nights stay, from £220 to £250 depending on the season. Our weekly rates range from £270 to £580 in high season.



DERWEN COTTAGE

01267 202725 / www.derwencottageholidays.co.uk / SA32 7BH

LOCATION:

Brechfa. About 30 minutes drive from Skanda Vale.

FACILITIES:

Self catering holiday cottage – ideal for 4 adults and 4 children or 3 couples, set in a beautiful, secluded valley; with its own garden, access to a waterfall, and 20 acre Nature Reserve. Lounge, dining room and fully equipped kitchen. All towels and linen are provided. Wifi. Onsite wood-fired sauna available.

PRICES:

Prices vary throughout the year and standard bookings (weekend, midweek, and full week) are available on our booking page. We no longer offer one night bookings. Non standard 2-3 nights mid week bookings can be made by arrangement, if the cottage is available.



BRONHAUL FARM COTTAGES

01267 211303 / www.bronhaulfarm.co.uk / SA33 5NQ

LOCATION:

Bancyfelin. About 33 minutes drive from Skanda Vale.

FACILITIES:

Self catering 4 star cottages in peaceful, homely location. DVD, CD and WiFi. Dishwasher, washing machine, fridge/ freezer, towels, bedlinen, games, CDs, DVDs, books, gas BBQ and garden furniture. Shared natural wooded grounds, gardens and paddock.

PRICES:

From £125 for a weekend. Please call for prices.



PANTYSGYFARNOG FARMHOUSE B&B

077888 00210 / www.web.com / SA33 5DE

LOCATION:

Llangynog. About 30 minutes from Skanda Vale on the A40, between Carmarthen and St Clears.

FACILITIES:

Can accommodate up to 9 guests.

Recently renovated to a high standard.

3x ensuite 5 star rooms all with TV, towels, free wifi, snacks and drinks.

Toiletries, hairdryers, luxury bedding... too many extras to list.

All rooms are spacious with sitting areas.

Vegetarian breakfast available.

PRICES:

£40 per guest per night, which includes breakfast or hamper if required.



MILKWOOD CHALET

02920 485866 / 07775 982697 / SA33 5AJ

LOCATION:

Llangain / Llansteffan. About 33 minutes drive from Skanda Vale.

FACILITIES:

Self-catering chalet near the sea – sleeps five people. Features open plan lounge / kitchen with cooker, microwave, rice cooker, TV and DVD player. There is one main double bedroom, plus a bedroom with adult size bunk beds and a single bedroom. Parking available.

PRICES:

3 days from £200 for up to 5 people. There is an extra charge for bed linen, or bring your own if you prefer.



FERRYSIDE FARM

07817 718445 / www.ferrysidefarm.co.uk / SA17 5TN

LOCATION:

Ferryside Farm, Ferryside (with sea views). 22 miles, or a 45 minute drive.

FACILITIES:

This is a four star farm house, able to sleep 6. All the rooms in the house are en-suite with TV, towels, linen and tea making facilities. A light breakfast of tea, coffee, cereals and toast is available between 7:30am and 9:00am.

PRICES:

Single person in a double room £55 per night (with or without a light breakfast).

Two people in a double room £60 per night (with or without a light breakfast).



PENLAN FACH FARM

01558 685901 / SA19 7YN

LOCATION:

Llandeilo. About 51 minutes drive from Skanda Vale.

FACILITIES:

Open plan accommodation, featuring large living/dining area with leather sofas and log burner. Fully equipped kitchen and shower room. Large bedroom situated on the mezzanine floor – sleeps two people in a double bed. Towels and wi-fi included.

PRICES:

Daily: from £80

Weekly: from £450

Monthly: from £1,200

